

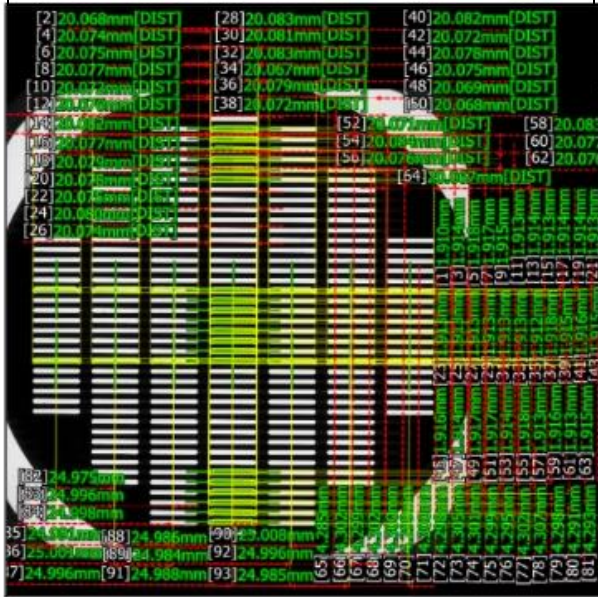
INSPECTION CERTIFICATE

3.1

In Accordance with EN 10204

Blau-Metall, Inh. Thomas Blau
Am Morgenberg 1a, DE-07819 Triptis, Germany

Phone/Fax: +49(0)36482/32403
E-Mail: info@analysensiebe.de
iso5223.com • labsieves.com



Test Sieve Type	Blau-Metall Test Sieve, Oblong 1.90 x 20.0 mm
Standard	EN ISO 5223
Serial No.	
Date (mm/dd/yyyy)	4/27/2022
Inspection Result	OK
Instrument	Keyence IM-Series, S/N: 8C710237
Inspector	P. Blau
Program File Name	LG 200 mm - 1.90 x 20.0 mm - EN
Comment	We hereby confirm that the instrument is correctly calibrated.

Type of Inspection	Inspection Result	This Sieve complies with:
Calibration	OK	EN ISO 5223

[Measurement results]

No.	measurement item	mes. value	units	design val.	upper limit	lower Limit	res.
1	Width 1	1.910	mm	1.900	0.040	-0.040	OK
2	Length 1[MAX]	20.068	mm	20.000	0.200	-0.200	OK
3	Width 2	1.914	mm	1.900	0.040	-0.040	OK
4	Length 2[MAX]	20.074	mm	20.000	0.200	-0.200	OK
5	Width 3	1.918	mm	1.900	0.040	-0.040	OK
6	Length 3[MAX]	20.075	mm	20.000	0.200	-0.200	OK
7	Width 4	1.917	mm	1.900	0.040	-0.040	OK
8	Length 4[MAX]	20.077	mm	20.000	0.200	-0.200	OK
9	Width 5	1.915	mm	1.900	0.040	-0.040	OK
10	Length 5[MAX]	20.072	mm	20.000	0.200	-0.200	OK
11	Width 6	1.913	mm	1.900	0.040	-0.040	OK
12	Length 6[MAX]	20.076	mm	20.000	0.200	-0.200	OK
13	Width 7	1.914	mm	1.900	0.040	-0.040	OK
14	Length 7[MAX]	20.082	mm	20.000	0.200	-0.200	OK
15	Width 8	1.913	mm	1.900	0.040	-0.040	OK
16	Length 8[MAX]	20.077	mm	20.000	0.200	-0.200	OK
17	Width 9	1.914	mm	1.900	0.040	-0.040	OK
18	Length 9[MAX]	20.079	mm	20.000	0.200	-0.200	OK
19	Width 10	1.914	mm	1.900	0.040	-0.040	OK
20	Length 10[MAX]	20.078	mm	20.000	0.200	-0.200	OK
21	Width 11	1.913	mm	1.900	0.040	-0.040	OK

No.	measurement item	mes. value	units	design val.	upper limit	lower Limit	res.
22	Length 11[MAX]	20.075	mm	20.000	0.200	-0.200	OK
23	Width 12	1.913	mm	1.900	0.040	-0.040	OK
24	Length 12[MAX]	20.080	mm	20.000	0.200	-0.200	OK
25	Width 13	1.913	mm	1.900	0.040	-0.040	OK
26	Length 13[MAX]	20.074	mm	20.000	0.200	-0.200	OK
27	Width 14	1.913	mm	1.900	0.040	-0.040	OK
28	Length 14[MAX]	20.083	mm	20.000	0.200	-0.200	OK
29	Width 15	1.913	mm	1.900	0.040	-0.040	OK
30	Length 15[MAX]	20.081	mm	20.000	0.200	-0.200	OK
31	Width 16	1.913	mm	1.900	0.040	-0.040	OK
32	Length 16[MAX]	20.083	mm	20.000	0.200	-0.200	OK
33	Width 17	1.913	mm	1.900	0.040	-0.040	OK
34	Length 17[MAX]	20.067	mm	20.000	0.200	-0.200	OK
35	Width 18	1.912	mm	1.900	0.040	-0.040	OK
36	Length 18[MAX]	20.079	mm	20.000	0.200	-0.200	OK
37	Width 19	1.918	mm	1.900	0.040	-0.040	OK
38	Length 19[MAX]	20.072	mm	20.000	0.200	-0.200	OK
39	Width 20	1.915	mm	1.900	0.040	-0.040	OK
40	Length 20[MAX]	20.082	mm	20.000	0.200	-0.200	OK
41	Width 21	1.916	mm	1.900	0.040	-0.040	OK
42	Length 21[MAX]	20.072	mm	20.000	0.200	-0.200	OK
43	Width 22	1.915	mm	1.900	0.040	-0.040	OK
44	Length 22[MAX]	20.078	mm	20.000	0.200	-0.200	OK
45	Width 23	1.916	mm	1.900	0.040	-0.040	OK
46	Length 23[MAX]	20.075	mm	20.000	0.200	-0.200	OK
47	Width 24	1.914	mm	1.900	0.040	-0.040	OK
48	Length 24[MAX]	20.069	mm	20.000	0.200	-0.200	OK
49	Width 25	1.917	mm	1.900	0.040	-0.040	OK
50	Length 25[MAX]	20.068	mm	20.000	0.200	-0.200	OK
51	Width 26	1.917	mm	1.900	0.040	-0.040	OK
52	Length 26[MAX]	20.071	mm	20.000	0.200	-0.200	OK
53	Width 27	1.914	mm	1.900	0.040	-0.040	OK
54	Length 27[MAX]	20.084	mm	20.000	0.200	-0.200	OK
55	Width 28	1.918	mm	1.900	0.040	-0.040	OK
56	Length 28[MAX]	20.076	mm	20.000	0.200	-0.200	OK
57	Width 29	1.913	mm	1.900	0.040	-0.040	OK
58	Length 29[MAX]	20.083	mm	20.000	0.200	-0.200	OK
59	Width 30	1.916	mm	1.900	0.040	-0.040	OK

No.	measurement item	mes. value	units	design val.	upper limit	lower Limit	res.
60	Length 30[MAX]	20.077	mm	20.000	0.200	-0.200	OK
61	Width 31	1.913	mm	1.900	0.040	-0.040	OK
62	Length 31[MAX]	20.076	mm	20.000	0.200	-0.200	OK
63	Width 32	1.915	mm	1.900	0.040	-0.040	OK
64	Length 32[MAX]	20.067	mm	20.000	0.200	-0.200	OK
65	Pitch 1-2	4.285	mm	4.300	0.120	-0.120	OK
66	Pitch 2-3	4.302	mm	4.300	0.120	-0.120	OK
67	Pitch 3-4	4.299	mm	4.300	0.120	-0.120	OK
68	Pitch 4-5	4.302	mm	4.300	0.120	-0.120	OK
69	Pitch 5-6	4.300	mm	4.300	0.120	-0.120	OK
70	Pitch 22-7	4.299	mm	4.300	0.120	-0.120	OK
71	Pitch 7-8	4.300	mm	4.300	0.120	-0.120	OK
72	Pitch 8-9	4.298	mm	4.300	0.120	-0.120	OK
73	Pitch 9-10	4.305	mm	4.300	0.120	-0.120	OK
74	Pitch 10-11	4.301	mm	4.300	0.120	-0.120	OK
75	Pitch 11-12	4.299	mm	4.300	0.120	-0.120	OK
76	Pitch 12-29	4.295	mm	4.300	0.120	-0.120	OK
77	Pitch 13-14	4.302	mm	4.300	0.120	-0.120	OK
78	Pitch 14-15	4.307	mm	4.300	0.120	-0.120	OK
79	Pitch 15-16	4.298	mm	4.300	0.120	-0.120	OK
80	Pitch 16-17	4.291	mm	4.300	0.120	-0.120	OK
81	Pitch 17-18	4.293	mm	4.300	0.120	-0.120	OK
82	Pitch 19-20	24.975	mm	25.000	0.500	-0.500	OK
83	Pitch 20-21	24.996	mm	25.000	0.500	-0.500	OK
84	Pitch 21-22	24.998	mm	25.000	0.500	-0.500	OK
85	Pitch 22-23	24.991	mm	25.000	0.500	-0.500	OK
86	Pitch 23-24	25.001	mm	25.000	0.500	-0.500	OK
87	Pitch 24-25	24.996	mm	25.000	0.500	-0.500	OK
88	Pitch 26-27	24.986	mm	25.000	0.500	-0.500	OK
89	Pitch 27-28	24.984	mm	25.000	0.500	-0.500	OK
90	Pitch 28-29	25.008	mm	25.000	0.500	-0.500	OK
91	Pitch 29-30	24.988	mm	25.000	0.500	-0.500	OK
92	Pitch 30-31	24.996	mm	25.000	0.500	-0.500	OK
93	Pitch 31-32	24.985	mm	25.000	0.500	-0.500	OK